

# CERTIFICATE OF LOCATION OF GOVERNMENT CORNER

NORTHEAST Corner of Section 7, Township 106 N., Range 42 W., 5th P.M.

STATE OF MINNESOTA, County of MURRAY

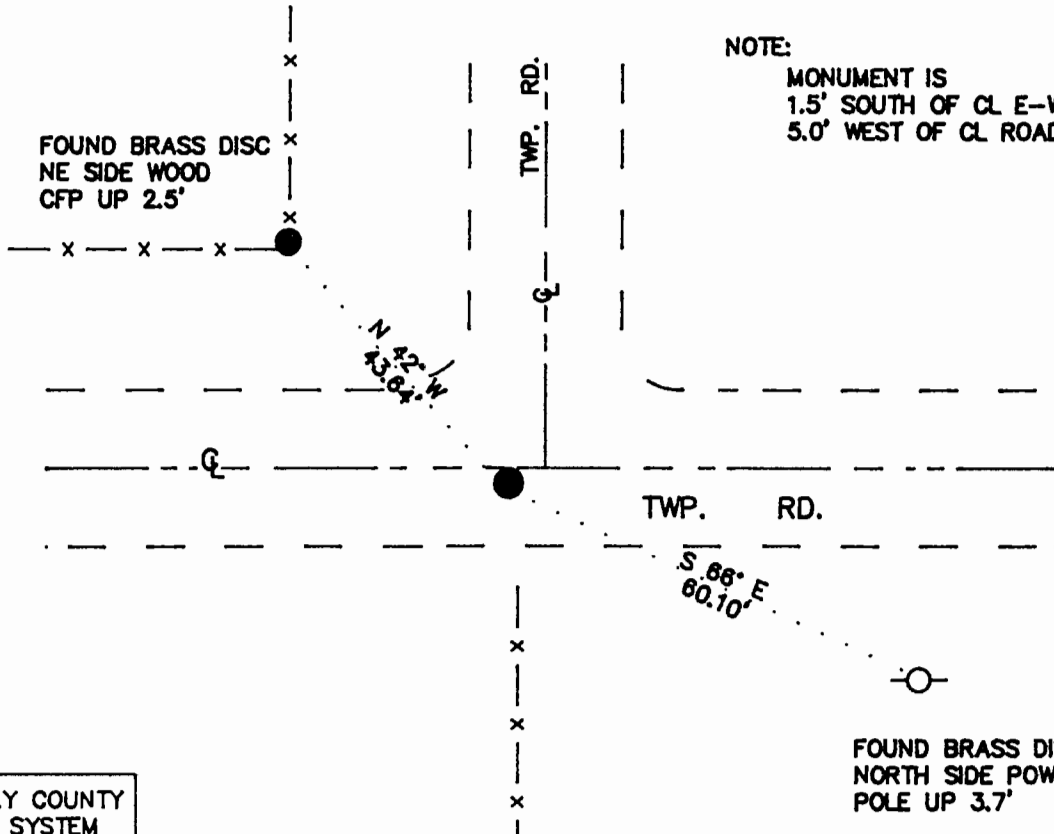
At the corner location shown on the sketch:

On 5/3/89 found a 1/2" IRON ROD, DOWN 0.7' WITH RLS # 12967 ON CAP  
DATE

left monument as found,  lowered monument,  removed monument (explain)

On \_\_\_\_\_ Placed a \_\_\_\_\_  
DATE

### SKETCH OF REFERENCE TIES



NOTE:  
MONUMENT IS  
1.5' SOUTH OF CL E-W ROAD  
5.0' WEST OF CL ROAD NORTH

1983 MURRAY COUNTY  
COORDINATE SYSTEM  
N=158290.597  
E=458667.640

BEARINGS OBSERVED WITH COMPASS

Statement of evidence relative to this corner location is on back of page.

7/13/89  
G-1225

I hereby certify that this document and the data contained herein was prepared by me or under my direct supervision.

Louell R. Romerding Jr. 7-21-89  
SIGNATURE DATE

Registration No. 17005

- Land Surveyor,  Professional Engineer
- County Surveyor,  County Engineer

OFFICE OF THE COUNTY RECORDER  
County of Murray

I hereby certify that this document was filed in the Co. recorders office at 10:00 A.M. on the 24th day of July A.D., 1989

County Recorder James V. Johnson  
By \_\_\_\_\_, Deputy

DOCUMENT NO. \_\_\_\_\_

Northeast Corner of Section 7, Township 106 North, Range 42 West

The DNR Bureau of Engineering contacted the following offices for survey information:

MN Secretary of State's Office  
Murray County Offices of the Recorder and Highway Engineer  
Mn/DOT Office in St. Paul  
Mn/DOT Office in Willmar  
Sioux Engineering, Inc., Office in Windom  
Madsen Land Surveying Office in Fairmont  
Bell Surveying, Inc., Office in Worthington  
Lyle Moseng and Associates Office in Marshall

- 1866 U.S. General Land Office notes obtained from the Secretary of State's Office show the corner marked with a post in mound.
- 1955 Air photos from the DNR Bureau of Engineering show definite occupation north-south and east-west at this corner.
- 1981 Field notes, worksheets, and a certificate of survey by Gary D. Martin, RLS #12967, obtained from Madsen Land Surveying show that a 6 foot north-south by 15 foot east-west by 3.5 foot deep hole was dug in area of corner. The hole included an area on the center line of an east-west road from a fence line south to the center line of a road north. In digging, clay was encountered at a depth of 3.5 feet and a monument was not found. Corner was established on the center of the east-west road and in line with fence south. A 1/2" rebar with a cap was set to mark corner and the following ties are shown to it:
- 6.0 feet west of the center line of road north
  - 2635.6 feet west of occupation lines located in the area of the north quarter corner of Section 8
  - 5278.7 feet west of occupation lines located in the area of the northeast corner of Section 8
  - 2627.59 feet from the north quarter corner of Section 7
  - 2616.48 feet from the east quarter corner of Section 7
  - brass tag in telephone pole, S. 71° E., 60.04 feet
  - brass tag in corner fence post, S. 9° E., 28.90 feet
  - brass tag in corner fence post, N. 49° W., 43.65 feet
- 1989 The DNR Bureau of Engineering conducted a search for this corner and found a 1/2" iron rod with plastic cap stamped "RLS #12967", down 0.7 ft.. Iron rod was found to measure:
- 2627.51 ft. from the north quarter corner of Section 7
  - 2616.43 ft. from the east quarter corner of Section 7
- Searched for and found record ties as shown.

Analysis of the available information led the DNR Bureau of Engineering to conclude that the found iron rod marks the location of the corner.